

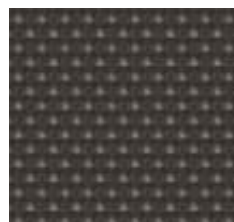
SEAT COVER FABRICS



ARTICLE: 3857 LS / 660
PART NUMBER: FF03857137LS660
COMPOSITION: 91% wool, 9% polyamide
WIDTH: 136 cm / 54"
WEIGHT: 405 g/m², 11.9 oz/sy
QUANTITY: 1'553.8 lin.m., 1'699.1 ly



ARTICLE: 48569 LS / 480
PART NUMBER: FF48569137LS480
COMPOSITION: 91% wool, 9% polyamide
WIDTH: 139 cm / 55"
WEIGHT: 380 g/m², 11.0 oz/sy
QUANTITY: 384.1 lin.m., 420.0 ly



ARTICLE: 5328 LS / 790
PART NUMBER: FF05328137LS790
COMPOSITION: 92% wool, 8% polyamide
WIDTH: 137 cm / 54"
WEIGHT: 405 g/m², 12.0 oz/sy
QUANTITY: 379.4 lin.m., 414.9 ly

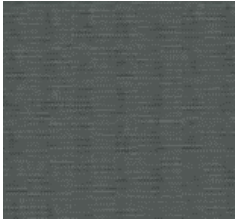


ARTICLE: 3778 LS / 550
PART NUMBER: FF03778140LS550
COMPOSITION: 60% wool, 40% viscose
WIDTH: 140 cm / 55.1"
WEIGHT: 360 g/m², 10.6 oz/sy
QUANTITY: 471.9 lin.m, 516.07 ly



ARTICLE: 7777 LS / 074
PART NUMBER: FF07777137LS074
COMPOSITION: 90% wool, 10% polyamide
WIDTH: 137 cm / 54"
WEIGHT: 485 g/m², 14.3 oz/sy
QUANTITY: 139.4 lin.m., 152.4 ly
Special remark: stocked in USA

CURTAIN FABRICS



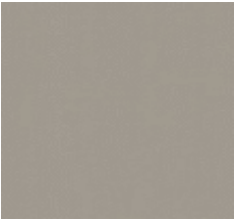
ARTICLE: 3252 LS / 745
PART NUMBER: FF03252140LS745
COMPOSITION: 100% polyester
WIDTH: 140 cm / 55"
WEIGHT: 325 g/m², 9.6 oz/sy
QUANTITY: 52.7 lin.m., 57.6 ly



ARTICLE: 5312 LS / 750
PART NUMBER: FF05312137LS750
COMPOSITION: 100% polyester
WIDTH: 138 cm / 54.3"
WEIGHT: 315 g/m², 9.3 oz/sy
QUANTITY: 43.8 lin.m., 47.9 ly



ARTICLE: 13954 LS / 780
PART NUMBER: FF13954137LS780
COMPOSITION: 100% polyester
WIDTH: 139 cm / 55"
WEIGHT: 310 g/m², 9.1 oz/sy
QUANTITY: 467.5 lin.m., 633.1 ly



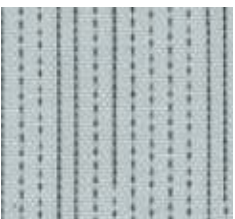
ARTICLE: 5039 LS / 133
PART NUMBER: FF05039136LS133
COMPOSITION: 100% polyester
WIDTH: 136 cm / 53.5"
WEIGHT: 265 g/m², 7.8 oz/sy
QUANTITY: 27.9 lin.m., 30.5 ly



ARTICLE: 5039 LS / 422
PART NUMBER: FF05039136LS422
COMPOSITION: 100% polyester
WIDTH: 136 cm / 53.5"
WEIGHT: 265 g/m², 7.8 oz/sy
QUANTITY: 297.1 lin.m., 324.9 ly



ARTICLE: 5039 LS / 710
PART NUMBER: FF05039136LS710
COMPOSITION: 100% polyester
WIDTH: 136 cm / 53.5"
WEIGHT: 265 g/m², 7.8 oz/sy
QUANTITY: 35.2 lin.m., 38.5 ly



ARTICLE: 14496 LS / 700
PART NUMBER: FF14496138LS700
COMPOSITION: 100% polyester
WIDTH: 137 cm / 54"
WEIGHT: 295 g/m², 8.7 oz/sy
QUANTITY: 258 lin.m., 282.6 ly

Special remark: [stocked in USA](#)

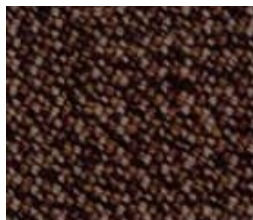


ARTICLE: 14533 LS / 140
PART NUMBER: FF14533137LS140
COMPOSITION: 100% polyester
WIDTH: 137 cm / 54"
WEIGHT: 230 g/m², 6.8 oz/sy
QUANTITY: 56.49 lin.m., 61.77 ly

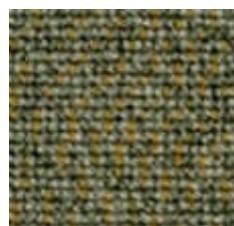
CARPETS WOOL



ARTICLE: Melair 3232 LS D913/700
PART NUMBER: FT00913252LS700
COMPOSITION: 100% wool
PILE HEIGHT: 3 mm, loop pile
WIDTH: 252 cm / 99"
WEIGHT: 1585 g/m², 46.6 oz/sy
QUANTITY: 64.8 m², 77.5 sqyd



ARTICLE: Melair 3232 LS D947/500
PART NUMBER: FT00947252LS500
COMPOSITION: 100% wool
PILE HEIGHT: 3 mm, loop pile
WIDTH: 252 cm / 99"
WEIGHT: 1785 g/m², 52.5 oz/sy
QUANTITY: 194.1 m², 232.1 sqyd



ARTICLE: Melair 3232 LS D1631/701
PART NUMBER: FT01631200LS701
COMPOSITION: 100% wool
PILE HEIGHT: 3 mm
WIDTH: 200 cm / 78.7"
WEIGHT: 1'670 g/m² / 49.3 ozs/sy
QUANTITY: 26.52 m², 31.71 sqyd

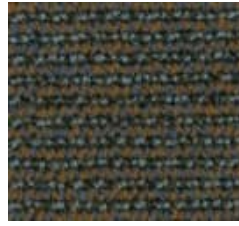


ARTICLE: Melair 3332 LS D908/700
PART NUMBER: FT00908200LS700
COMPOSITION: 100% wool
PILE HEIGHT: 3 mm, loop pile
WIDTH: 200 cm / 78.7"
WEIGHT: 1'925 g/m² / 56.8 ozs/sy
QUANTITY: 525.3 m² / 628.25 sqyd

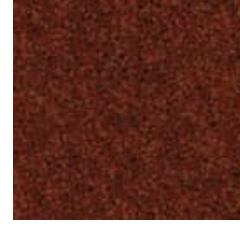
CARPETS HIGH PILE | FRONT CLASS



ARTICLE: Melair 4232 LS D909/700
 PART NUMBER: FT00909252LS700
 COMPOSITION: 100% wool
 PILE HEIGHT: 4 mm, loop pile
 WIDTH: 252 cm / 99"
 WEIGHT: 1905 g/m², 56.0 oz/sy
 QUANTITY: 1172.1m², 1401.8 sqyd
 Special remark: [quantity on stock at customer site **](#)



ARTICLE: Melair 4232 LS D957/701
 PART NUMBER: FT00957200LS701
 COMPOSITION: 100% wool
 PILE HEIGHT: 4 mm, loop pile
 WIDTH: 200 cm / 78.7"
 WEIGHT: 2470 g/m², 73.0 oz/sy
 QUANTITY: 210.7 m², 251.9 sqyd



ARTICLE: Melair 6226 LS D973/209
 PART NUMBER: FT00973252LS209
 COMPOSITION: 100% wool
 PILE HEIGHT: 6 mm, frisé
 WIDTH: 252 cm / 99"
 WEIGHT: 2730 g/m², 80.2 oz/sy
 QUANTITY: 517.5 m², 618.8 sqyd



ARTICLE: Melair 6226 LS D973/707
 PART NUMBER: FT00973200LS707
 COMPOSITION: 100% wool
 PILE HEIGHT: 6 mm, frisé
 WIDTH: 200 cm / 78.7"
 WEIGHT: 2730 g/m², 80.2 oz/sy
 QUANTITY: 108.0 m², 129.1 sqyd



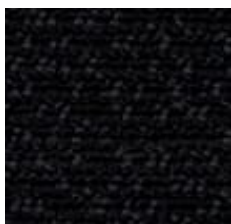
ARTICLE: Melair 4232 LS D1428/700
 PART NUMBER: FT01428252LS700
 COMPOSITION: 100% wool
 PILE HEIGHT: 4 mm, loop pile
 WIDTH: 252 cm / 99"
 WEIGHT: 1990 g/m², 58.0 oz/sy
 QUANTITY: 457.2 m², 546.8 sqyd



ARTICLE: Melair 8130 LS D1826/300
 PART NUMBER: FT01826252LS300
 COMPOSITION: 100% wool
 PILE HEIGHT: 8 mm, cut pile
 WIDTH: 252 cm / 99"
 WEIGHT: 2555 g/m², 59.0 oz/sy
 QUANTITY: 96.5 m², 115.4 sqyd

** Article is property of Lantal customer and will be directly sold by the current holder of the stock. Seller of the article will be solely responsible for quality of product

CARPETS WOOL/POLYAMIDE



ARTICLE: Melair 42132 LS D1615/703
PART NUMBER: FT01615200LS703
COMPOSITION: 100% polyamide
PILE HEIGHT: 4 & 2 mm, loop pile
WIDTH: 200 cm / 78"
WEIGHT: 1430 g/m², 42.0 oz/sy
QUANTITY: 1182.3 m², 1414.01 sqyd



ARTICLE: Melair 3230 LS D2180/300
PART NUMBER: FT02180200LS300
COMPOSITION: 80% wool, 20% polyamide
PILE HEIGHT: 3 mm, loop pile
WIDTH: 200 cm / 78"
WEIGHT: 1775 g/m², 52.2 oz/sy
QUANTITY: 141.9 m², 169.71 sqyd

LANTAL

LEATHERS



PART NUMBER: FL09361000FL104
COMPOSITION: 100% genuine Leather
SIZE OF HIDE: Approx. 5.2 sqm
WEIGHT: 800 g/m2 (+/-10%)
QUANTITY: 30.23 sqm, 36.15 sqyd



PART NUMBER: FL09361000FL114
COMPOSITION: 100% genuine Leather
SIZE OF HIDE: Approx. 5.2 sqm
WEIGHT: 800 g/m2 (+/-10%)
QUANTITY: 29.5 sqm, 35.3 sqyd



PART NUMBER: FL09549000FL632
COMPOSITION: 100% genuine Leather
SIZE OF HIDE: Approx. 5.2 sqm
WEIGHT: 800 g/m2 (+/-10%)
QUANTITY: 359.9 sqm, 430.43 sqyd



PART NUMBER: FL09371000FL442
COMPOSITION: 100% genuine Leather
SIZE OF HIDE: Approx. 5.2 sqm
WEIGHT: 800 g/m2 (+/-10%)
QUANTITY: 84.7 sqm, 101.3 sqyd



PART NUMBER: FL09549000FL772
COMPOSITION: 100% genuine Leather
SIZE OF HIDE: Approx. 5.2 sqm
WEIGHT: 800 g/m2, (+/-10%)
QUANTITY: 508.8 sqm, 608.4 sqyd

Special remark: shall only be used for headrest as too thin for seatcover



PART NUMBER: FL09556000FL707
COMPOSITION: 100% genuine Leather
SIZE OF HIDE: Approx. 5.2 sqm
WEIGHT: 1200 g/m2 (+/-10%)
QUANTITY: 399.1 sqm, 436.4 sqyd