

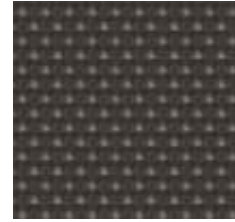
## SEAT COVER FABRICS



ARTICLE: 3857 LS / 660  
PART NUMBER: FF03857137LS660  
COMPOSITION: 91% wool, 9% polyamide  
WIDTH: 136 cm / 54"  
WEIGHT: 405 g/m<sup>2</sup>, 11.9 oz/sy  
QUANTITY: 1'553.8 lin.m., 1'699.1 ly



ARTICLE: 48569 LS / 480  
PART NUMBER: FF48569137LS480  
COMPOSITION: 91% wool, 9% polyamide  
WIDTH: 139 cm / 55"  
WEIGHT: 380 g/m<sup>2</sup>, 11.0 oz/sy  
QUANTITY: 384.1 lin.m., 420.0 ly



ARTICLE: 5328 LS / 790  
PART NUMBER: FF05328137LS790  
COMPOSITION: 92% wool, 8% polyamide  
WIDTH: 137 cm / 54"  
WEIGHT: 405 g/m<sup>2</sup>, 12.0 oz/sy  
QUANTITY: 379.4 lin.m., 414.9 ly

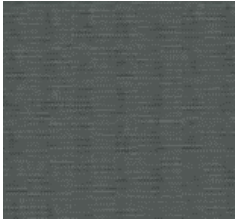


ARTICLE: 3778 LS / 550  
PART NUMBER: FF03778140LS550  
COMPOSITION: 60% wool, 40% viscose  
WIDTH: 140 cm / 55.1"  
WEIGHT: 360 g/m<sup>2</sup>, 10.6 oz/sy  
QUANTITY: 471.9 lin.m, 516.07 ly



ARTICLE: 7777 LS / 074  
PART NUMBER: FF07777137LS074  
COMPOSITION: 90% wool, 10% polyamide  
WIDTH: 137 cm / 54"  
WEIGHT: 485 g/m<sup>2</sup>, 14.3 oz/sy  
QUANTITY: 139.4 lin.m., 152.4 ly  
Special remark: stocked in USA

## CURTAIN FABRICS



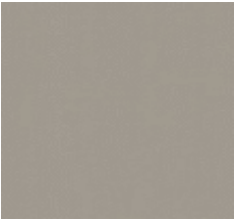
ARTICLE: 3252 LS / 745  
 PART NUMBER: FF03252140LS745  
 COMPOSITION: 100% polyester  
 WIDTH: 140 cm / 55"  
 WEIGHT: 325 g/m<sup>2</sup>, 9.6 oz/sy  
 QUANTITY: 52.7 lin.m., 57.6 ly



ARTICLE: 5312 LS / 750  
 PART NUMBER: FF05312137LS750  
 COMPOSITION: 100% polyester  
 WIDTH: 138 cm / 54.3"  
 WEIGHT: 315 g/m<sup>2</sup>, 9.3 oz/sy  
 QUANTITY: 43.8 lin.m., 47.9 ly



ARTICLE: 13954 LS / 780  
 PART NUMBER: FF13954137LS780  
 COMPOSITION: 100% polyester  
 WIDTH: 139 cm / 55"  
 WEIGHT: 310 g/m<sup>2</sup>, 9.1 oz/sy  
 QUANTITY: 467.5 lin.m., 633.1 ly



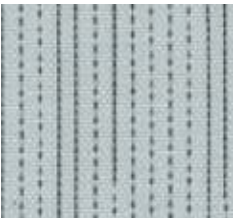
ARTICLE: 5039 LS / 133  
 PART NUMBER: FF05039136LS133  
 COMPOSITION: 100% polyester  
 WIDTH: 136 cm / 53.5"  
 WEIGHT: 265 g/m<sup>2</sup>, 7.8 oz/sy  
 QUANTITY: 27.9 lin.m., 30.5 ly



ARTICLE: 5039 LS / 422  
 PART NUMBER: FF05039136LS422  
 COMPOSITION: 100% polyester  
 WIDTH: 136 cm / 53.5"  
 WEIGHT: 265 g/m<sup>2</sup>, 7.8 oz/sy  
 QUANTITY: 297.1 lin.m., 324.9 ly



ARTICLE: 5039 LS / 710  
 PART NUMBER: FF05039136LS710  
 COMPOSITION: 100% polyester  
 WIDTH: 136 cm / 53.5"  
 WEIGHT: 265 g/m<sup>2</sup>, 7.8 oz/sy  
 QUANTITY: 35.2 lin.m., 38.5 ly



ARTICLE: 14496 LS / 700  
 PART NUMBER: FF14496138LS700  
 COMPOSITION: 100% polyester  
 WIDTH: 137 cm / 54"  
 WEIGHT: 295 g/m<sup>2</sup>, 8.7 oz/sy  
 QUANTITY: 258 lin.m., 282.6 ly

Special remark: [stocked in USA](#)

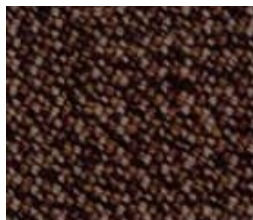


ARTICLE: 14533 LS / 140  
 PART NUMBER: FF14533137LS140  
 COMPOSITION: 100% polyester  
 WIDTH: 137 cm / 54"  
 WEIGHT: 230 g/m<sup>2</sup>, 6.8 oz/sy  
 QUANTITY: 56.49 lin.m., 61.77 ly

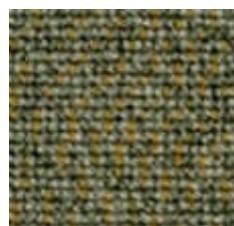
## CARPETS WOOL



ARTICLE: Melair 3232 LS D913/700  
PART NUMBER: FT00913252LS700  
COMPOSITION: 100% wool  
PILE HEIGHT: 3 mm, loop pile  
WIDTH: 252 cm / 99"  
WEIGHT: 1585 g/m<sup>2</sup>, 46.6 oz/sy  
QUANTITY: 64.8 m<sup>2</sup>, 77.5 sqyd



ARTICLE: Melair 3232 LS D947/500  
PART NUMBER: FT00947252LS500  
COMPOSITION: 100% wool  
PILE HEIGHT: 3 mm, loop pile  
WIDTH: 252 cm / 99"  
WEIGHT: 1785 g/m<sup>2</sup>, 52.5 oz/sy  
QUANTITY: 194.1 m<sup>2</sup>, 232.1 sqyd



ARTICLE: Melair 3232 LS D1631/701  
PART NUMBER: FT01631200LS701  
COMPOSITION: 100% wool  
PILE HEIGHT: 3 mm  
WIDTH: 200 cm / 78.7"  
WEIGHT: 1'670 g/m<sup>2</sup> / 49.3 ozs/sy  
QUANTITY: 26.52 m<sup>2</sup>, 31.71 sqyd

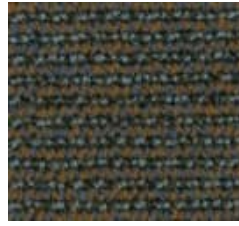


ARTICLE: Melair 3332 LS D908/700  
PART NUMBER: FT00908200LS700  
COMPOSITION: 100% wool  
PILE HEIGHT: 3 mm, loop pile  
WIDTH: 200 cm / 78.7"  
WEIGHT: 1'925 g/m<sup>2</sup> / 56.8 ozs/sy  
QUANTITY: 525.3 m<sup>2</sup> / 628.25 sqyd

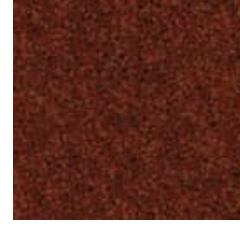
## CARPETS HIGH PILE | FRONT CLASS



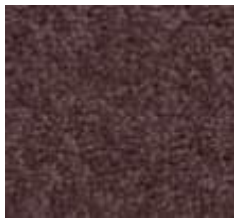
ARTICLE: Melair 4232 LS D909/700  
 PART NUMBER: FT00909252LS700  
 COMPOSITION: 100% wool  
 PILE HEIGHT: 4 mm, loop pile  
 WIDTH: 252 cm / 99"  
 WEIGHT: 1905 g/m<sup>2</sup>, 56.0 oz/sy  
 QUANTITY: 1172.1m<sup>2</sup>, 1401.8 sqyd  
 Special remark: [quantity on stock at customer site \\*\\*](#)



ARTICLE: Melair 4232 LS D957/701  
 PART NUMBER: FT00957200LS701  
 COMPOSITION: 100% wool  
 PILE HEIGHT: 4 mm, loop pile  
 WIDTH: 200 cm / 78.7"  
 WEIGHT: 2470 g/m<sup>2</sup>, 73.0 oz/sy  
 QUANTITY: 210.7 m<sup>2</sup>, 251.9 sqyd



ARTICLE: Melair 6226 LS D973/209  
 PART NUMBER: FT00973252LS209  
 COMPOSITION: 100% wool  
 PILE HEIGHT: 6 mm, frisé  
 WIDTH: 252 cm / 99"  
 WEIGHT: 2730 g/m<sup>2</sup>, 80.2 oz/sy  
 QUANTITY: 517.5 m<sup>2</sup>, 618.8 sqyd



ARTICLE: Melair 6226 LS D973/707  
 PART NUMBER: FT00973200LS707  
 COMPOSITION: 100% wool  
 PILE HEIGHT: 6 mm, frisé  
 WIDTH: 200 cm / 78.7"  
 WEIGHT: 2730 g/m<sup>2</sup>, 80.2 oz/sy  
 QUANTITY: 108.0 m<sup>2</sup>, 129.1 sqyd



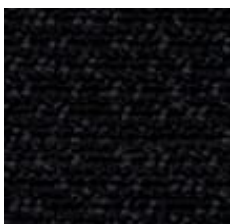
ARTICLE: Melair 4232 LS D1428/700  
 PART NUMBER: FT01428252LS700  
 COMPOSITION: 100% wool  
 PILE HEIGHT: 4 mm, loop pile  
 WIDTH: 252 cm / 99"  
 WEIGHT: 1990 g/m<sup>2</sup>, 58.0 oz/sy  
 QUANTITY: 457.2 m<sup>2</sup>, 546.8 sqyd



ARTICLE: Melair 8130 LS D1826/300  
 PART NUMBER: FT01826252LS300  
 COMPOSITION: 100% wool  
 PILE HEIGHT: 8 mm, cut pile  
 WIDTH: 252 cm / 99"  
 WEIGHT: 2555 g/m<sup>2</sup>, 59.0 oz/sy  
 QUANTITY: 96.5 m<sup>2</sup>, 115.4 sqyd

\*\* Article is property of Lantal customer and will be directly sold by the current holder of the stock. Seller of the article will be solely responsible for quality of product

## CARPETS WOOL/POLYAMIDE



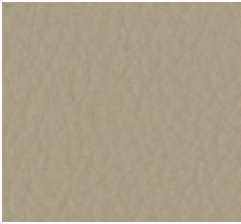
ARTICLE: Melair 42132 LS D1615/703  
PART NUMBER: FT01615200LS703  
COMPOSITION: 100% polyamide  
PILE HEIGHT: 4 & 2 mm, loop pile  
WIDTH: 200 cm / 78"  
WEIGHT: 1430 g/m<sup>2</sup>, 42.0 oz/sy  
QUANTITY: 1182.3 m<sup>2</sup>, 1414.01 sqyd



ARTICLE: Melair 3230 LS D2180/300  
PART NUMBER: FT02180200LS300  
COMPOSITION: 80% wool, 20% polyamide  
PILE HEIGHT: 3 mm, loop pile  
WIDTH: 200 cm / 78"  
WEIGHT: 1775 g/m<sup>2</sup>, 52.2 oz/sy  
QUANTITY: 141.9 m<sup>2</sup>, 169.71 sqyd

# LANTAL

## LEATHERS



PART NUMBER: FL09361000FL104  
COMPOSITION: 100% genuine Leather  
SIZE OF HIDE: Approx. 5.2 sqm  
WEIGHT: 800 g/m2 (+/-10%)  
QUANTITY: 30.23 sqm, 36.15 sqyd



PART NUMBER: FL09361000FL114  
COMPOSITION: 100% genuine Leather  
SIZE OF HIDE: Approx. 5.2 sqm  
WEIGHT: 800 g/m2 (+/-10%)  
QUANTITY: 29.5 sqm, 35.3 sqyd



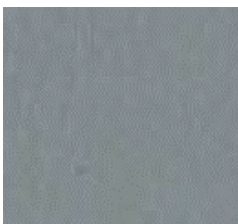
PART NUMBER: FL09549000FL632  
COMPOSITION: 100% genuine Leather  
SIZE OF HIDE: Approx. 5.2 sqm  
WEIGHT: 800 g/m2 (+/-10%)  
QUANTITY: 359.9 sqm, 430.43 sqyd



PART NUMBER: FL09371000FL442  
COMPOSITION: 100% genuine Leather  
SIZE OF HIDE: Approx. 5.2 sqm  
WEIGHT: 800 g/m2 (+/-10%)  
QUANTITY: 84.7 sqm, 101.3 sqyd



PART NUMBER: FL09361000FL410  
COMPOSITION: 100% genuine Leather  
SIZE OF HIDE: Approx. 5.2 sqm  
WEIGHT: 800 g/m2 (+/-10%)  
QUANTITY: 74.5 sqm, 89.11 sqyd



PART NUMBER: FL09549000FL772  
COMPOSITION: 100% genuine Leather  
SIZE OF HIDE: Approx. 5.2 sqm  
WEIGHT: 800 g/m2, (+/-10%)  
QUANTITY: 508.8 sqm, 608.4 sqyd

Special remark: shall only be used for headrest as too thin for seatcover



PART NUMBER: FL09556000FL707  
COMPOSITION: 100% genuine Leather  
SIZE OF HIDE: Approx. 5.2 sqm  
WEIGHT: 1200 g/m2 (+/-10%)  
QUANTITY: 399.1 sqm, 436.4 sqyd